



Product Name: Dynamic RGB® LED Spritzer 32"

Product Number: #66403 RGB

Assembled Dimensions: 32" x 32" x 32"; 2.2 lbs



**Prevent accidentally discarding small parts of hardware. Retain all carton contents until assembly and installation are complete.**


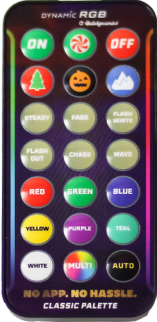
PRODUCTS ARE NOT INTENDED  
FOR COMMERCIAL USE

UPDATED: 2025-11-26

MADE IN CHINA

Page 1 of (4 of pages)

**⚠ Assemble in location for intended use.**  
 Remove all parts, hardware, and protective packaging from carton and carefully arrange on a clean, level, padded surface.

Qty.	Components
1	<div>Dynamic RGB® 32" Spritzer</div> 
1	<div>Dynamic RGB® Remote Control</div> 



**IMPORTANT!**  
**DO NOT REMOVE THE WHITE TAPE.**

## BASIC ASSEMBLY

STEP 1: Gently remove your spritzer from the packaging.

STEP 2: Find the center cluster and start unfolding the arms by bending them outward from the base. Pick one arm to start with and work your way around for best results.

STEP 3: Bend each arm away from the center, spacing them out evenly in all directions. Aim for a full, 360° starburst shape—or get creative and shape it your way!

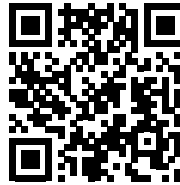
STEP 4: Once all arms are spaced around the center, adjust the angles to add depth and volume. Not all arms should lie flat—some should point slightly up or down.

STEP 5: Step back and check your spritzer from multiple angles. Make small adjustments to arms as needed to ensure an even, spherical look.

STEP 6: If you plan to hang or stake the spritzer, ensure it's shaped after mounting for final touch-ups. When hanging your Spritzer, always use the metal loop and avoid suspending it by the cord. Plug into a UL approved outlet or extension cord.

Need help?

Scan the QR code to watch our quick how-to video! →



## REMOTE CONTROL UNIT

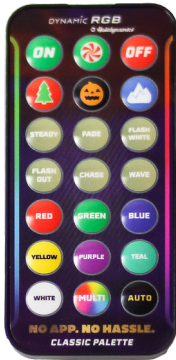
STEP 1: There is a transparent slip on the bottom of the Remote Control.

STEP 2: Take out the transparent slip to activate the Remote Control.

STEP 3: To change the battery, slide the cover plate off by pushing the small black area to the right direction. Pull out the old battery and replace it with new AAA, identical batteries.

STEP 4: Remove the battery after the holiday season to avoid damage of the remote control unit. Install a new battery into the remote control unit at the beginning of the next holiday season.





## REMOTE CONTROL OPERATION

STEP 1: Remove the Remote Control from it's packaging.

STEP 2: Use the Remote Control to reset the RGB light:

- Press the "OFF" button once.
- Press the "ON" button once.
- Press the "Steady" button once.

STEP 3: Now the Remote Control is cleared and ready to accept new options.

Button	Description	Button	Description	Button	Description
	On		Theme: Candy Cane 1. Chase Red-White-Green 2. Each color 3 sec. 3. Red base, white flash 4. Green base, white flash 5. Purple base, white flash		Off
	Theme: Christmas 1. Steady Red 2. Steady Green 3. Chase Red-Green 4. Wave Red-Green 5. Each color 3 seconds		Theme: Halloween 1. Steady Purple 2. Steady Yellow 3. Chase Purple-Yellow 4. Chase Purple only 5. Each color 3 seconds		Theme: Glacier 1. Steady Blue 2. Steady Teal 3. Chase Blue-White 4. Blue base, white flash 5. Each color 3 seconds
	Steady On		Wave Function		Flashing Pure White
	Flashing Out Function		Chasing Function		Flashing Opal Function
	Red Color		Green Color		Blue Color
	Yellow Color		Purple Color		Teal Color
	Pure White Color		Multi Color		Auto: Cycle all functions, in each color

## CARE & USE

1. Product is intended for indoor and outdoor use.
2. Do not mount or place the product near gas or electric heaters, fireplaces, candles, or other similar sources.
3. Do not use product outdoors in case of extreme weather conditions.
4. Do not use this product for any other purpose than its intended use.
5. Do not secure wiring of the product with sharp hooks or nails.
6. Not intended for permanent installation.

***At the end of the season clean it, if necessary, with a dry cloth.  
Place it in its original packaging and store it in a cool, dry place.***

Please contact our team for assembly assistance or questions at 1-855-505-6046 or email [Sales@Holidynamics.com](mailto:Sales@Holidynamics.com). We are available weekdays 8:00am to 5:00pm CST.